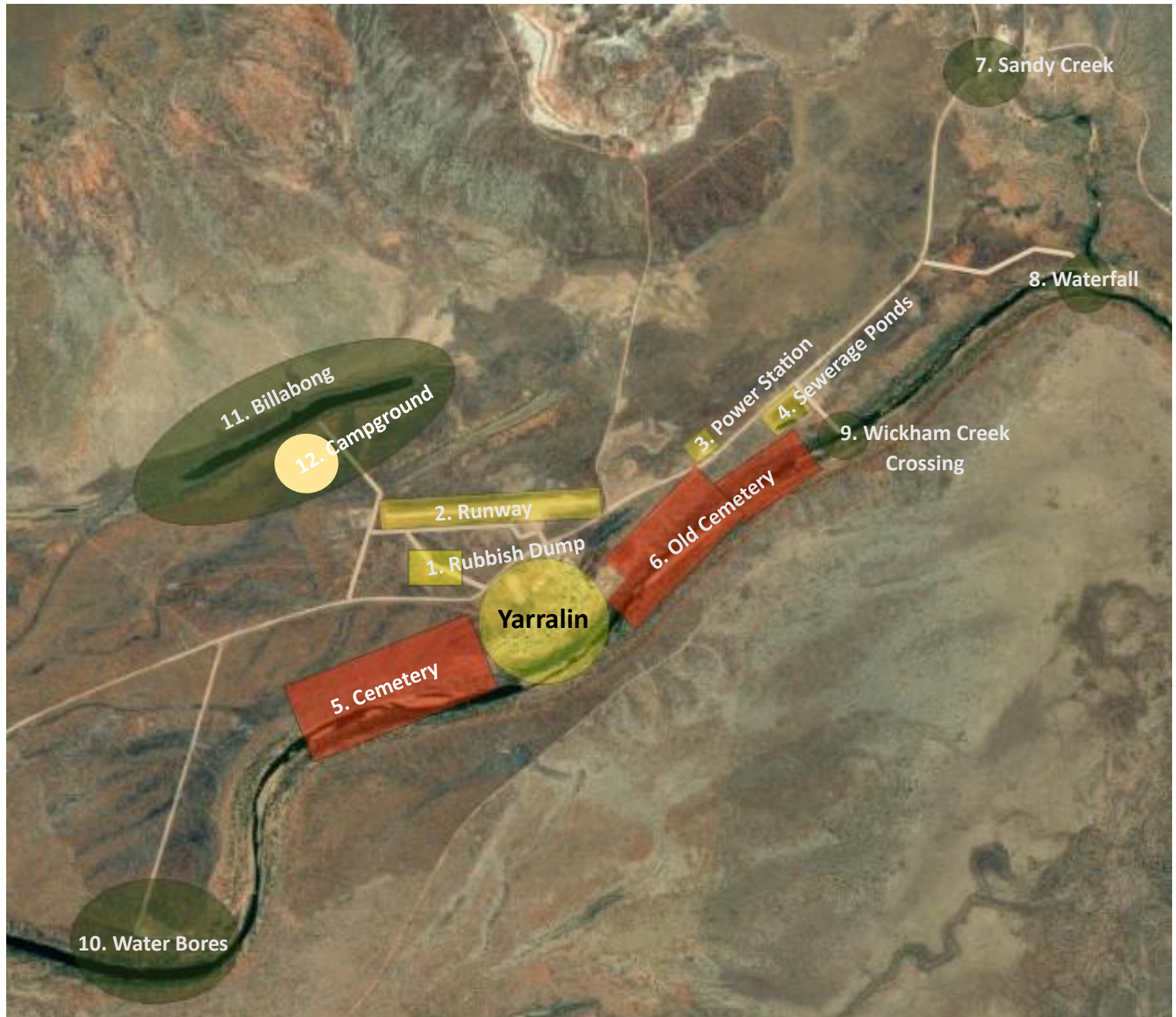


Yarralin – Culturally Sensitive Areas

The following guide has been put together by Walangeri Ngumpinku Aboriginal Corporation to provide advice to Yarralin visitors about where they can and can't go. Walangeri represents the traditional owners and Indigenous peoples of Yarralin.



1, 2, 3, 4. Yarralin: You are generally welcome to drive or walk around Yarralin on the public roads but be mindful of dogs in community - who will bark at strangers and may ran out in packs after you if you are walking through town.

5. Cemetery (Women's Area): Visitors should not go to the Cemetery at the bottom of town unless invited as part of attendance at a funeral. Between the Cemetery(5) and the Water Bores(10) is a sensitive women's area where visitors must NOT go. Do not go along the river in this area.

6. Old Cemetery (Men's Area): As you come into town, near the power station is a dirt road that follows the power lines. We recommend visitors avoid using this road as it passes the Old Cemetery, as well as the Men's Area just before the clinic. You should also avoid going along the river in this area.

7, 8, 9, 10: These creek crossings and river side spots are great fishing and swimming spots. Guests are welcome to visit these spots if they wish to get out of town for a break - but be wary of crocodiles! *There is currently a large croc at the Waterfall.*

11 Billabong: The Billabong is a great attraction just after the wet to see the water lilies. Swimming is not recommended.

12. Campground: The empty and fenced paddock near the billabong is recommended for any visitors with tents or even a caravan if they want to camp. All campers must be self-sufficient as there are no facilities available. *Enjoy the sunset views!*